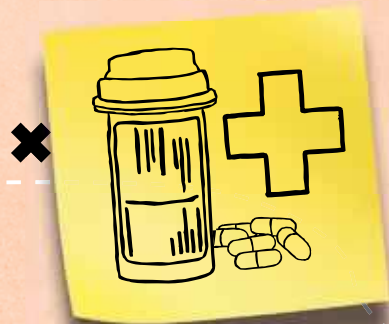


HEALTH & SOCIAL CARE SECTOR



350,000

There are over
350,000 nurses in
England!

Do you
want
to help
people?

You could help save lives

There are hundreds
of different career
paths, from IT and
admin to nursing and
physiotherapy

1.52 **1.56**
MILLION **MILLION**

Workers in
healthcare
in England

Workers in
social care
in England

(two of the biggest
sectors in the UK)

Advanced Dental Technicians earn between
£28,000 and £37,000 per year

£33,436
per year
(salary of
senior health
visitors)

Keep reading if you want a
rewarding, important career...



HEALTH & SOCIAL CARE

Careers Insight

It's one of the biggest sectors in the UK. It's also your chance to start a rewarding, challenging career that helps people live healthy, happy lives. So if you've got a big heart and want to work with people, then a career in health and social care could be for you.

Allied health professions

People who specialise in a specific area, like speech and language therapists, radiographers, occupational therapists and psychologists.

Childcare

Workers in this sector have to have the necessary skills to help children grow emotionally, physically and socially. As with most sectors job roles vary greatly, from managerial positions to hands on assistants.

Dental

There are a range of roles that are important to the dental team. Dentists, dental nurses, hygienists, technicians and therapists are all vital to providing good dental care.

Healthcare science

Includes pharmacists, biomedical scientists and laboratory assistants. Healthcare scientists play a vital role in the prevention, diagnosis and treatment of a range of medical conditions.

Health information

The people who help process, store and analyse patient information and medical records – medical records clerk, clinical researcher, IT professionals.

Nursing and midwifery

The largest group of staff in the NHS nurses play a vital role in assisting doctors and consultants. A caring persona is vital as nurses and midwives have to reassure and care for patients.

Social care

Social care workers and personal assistants help a variety of people, ranging from those with disabilities to the elderly.

Wider healthcare team

The wider healthcare team includes all the other jobs that keep the NHS running smoothly, like technicians, porters, gardeners, caterers, cleaning staff, etc.

SALARIES

Most people in this sector work for the NHS, where an entry-level position will earn you between £13,000 and £14,000 a year. With a level 2 or 3 qualification, you could be earning £16,000. The more experience you pick up, the more you'll earn.

GET INTO THE SECTOR

Volunteering

There are lots of volunteering opportunities in Health and Social Care, and this type of experience could qualify you for a fulltime position or boost your application for a course. Visit www.volunteering.org.uk or www.do-it.org.uk to search for opportunities near you.

Work experience

The NHS trusts in your area will be able to arrange work experience placements. Simply ring them up and ask to speak to someone in their HR, voluntary services or education and training departments.

GET QUALIFIED

Apprenticeships

If you're aged 16 or over, you could take an Apprenticeship in health and social care and get a job with an employer; all of these are NVQ level 2:

- Health and Social Care
- Pharmacy Assistants and Technicians
- Support Services in Healthcare

Advanced Apprenticeships

You could also do an advanced Apprenticeship; all of these are NVQ level 3:

- Dental Nursing
- Health and Social Care
- Pharmacy Assistants and Technicians

A Levels

Here are some A Levels relevant to the sector:

- Biology (Human)
- Health and Social Care
- Physical Education

Foundation Degrees

A Foundation Degree is a university-level qualification that is equivalent to the first two years of an Honours Degree. They are different from Honours Degrees as they involve learning in the workplace as well as at university or college.

College Courses

A college course can also be a great route into this sector. To see which colleges have relevant courses in your region check out www.opendoorsmedia.co.uk.

USEFUL LINKS

www.opendoorsmedia.co.uk - The best careers site on the web.

www.skillsforhealth.org.uk - Skills for Health • www.skillsforcare.org.uk - Skills for Care.

www.careersbox.co.uk - Home to a fantastic library of free careers videos.